



STOCK PRODUCT CATALOG

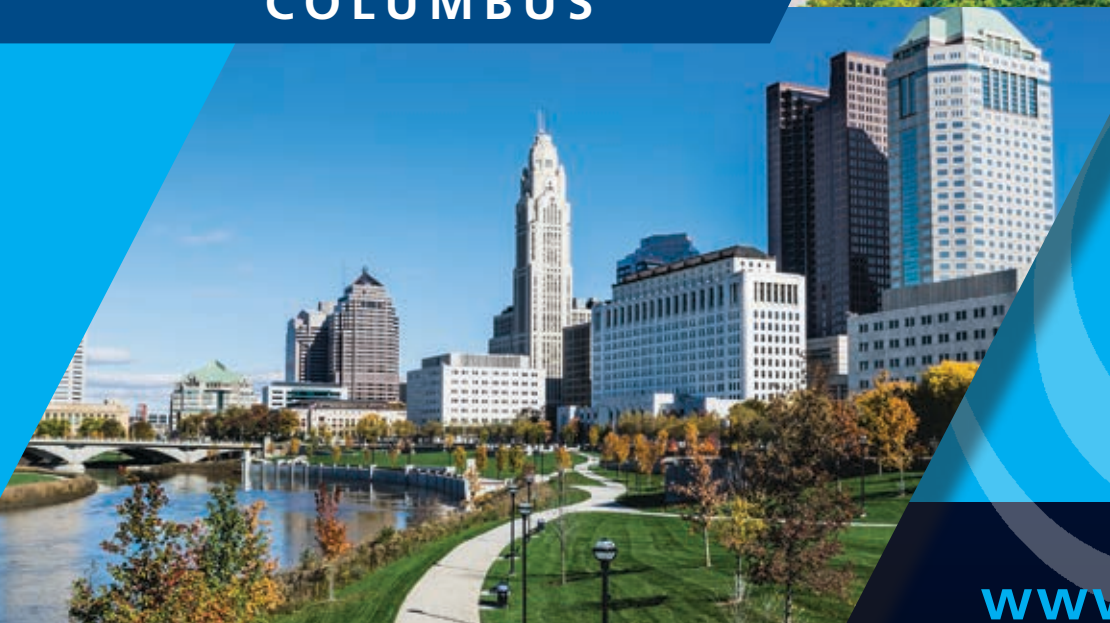
CLEVELAND



AKRON



COLUMBUS



www.mussun.com



Cleveland

3419 Carnegie Avenue
Cleveland, Ohio 44115-2638

Phone: 216-431-5088
E-mail: cleveland@mussun.com
Web: www.mussun.com



**Cleveland Sales Office, Warehouse,
and Learning Center**

Akron

470 Portage Lakes Drive
Suite 211
Akron, Ohio 44319-2298

Phone: 330-644-8836
E-mail: akron@mussun.com
Web: www.mussun.com



Akron Sales Office

Columbus

1715 Westbelt Drive
Columbus, OH 43228

Phone: 614-294-4822
E-mail: columbus@mussun.com
Web: www.mussun.com



**Columbus Sales Office, Warehouse,
and Learning Center**

www.mussun.com

Manufacturers' Representatives since 1951



INDEX

AIR DISTRIBUTION, VAV BOXES, MOTORIZED DAMPERS	PAGE
Air Distribution & Accessories	4-10
Motorized Zone Dampers	11
Single Duct VAV Boxes, Direct Digital Controls	12-13

DAMPERS, LOUVERS, AND ACCESS DOORS	
Fire Dampers	14
Ceiling Radiation Dampers / Louvers / Brick Vents	15
Duct Access Doors	16
Drywall Access Doors	17

SHEETMETAL, FLEX, AND ACCESSORIES	
Snaplock Pipe & Fittings	18-20
Tall Cones & Caps, Roof Jacks, Band Iron, Cable Hangers	21
Spiral Pipe & Fittings	22
Dual Wall Pipe & Fittings - Stainless and B-vent	23
Flex Duct, Insulation Sleeves & Duct Wrap	24
Tools, Fasteners, Sealants, Tape & Clamps	25

ROOF CURBS AND FLASHINGS	
Roof Curbs, Equipment Rails, Pipe Curbs & Supports	26-27

FANS	
Ceiling Cabinet Fans & Accessories; Roof Exhaust Fans	28-30

VIBRATION ISOLATION	
Neoprene and Spring Hangers & Mounts	31

SMOKE DETECTORS	
Duct Smoke Detectors & Accessories	32

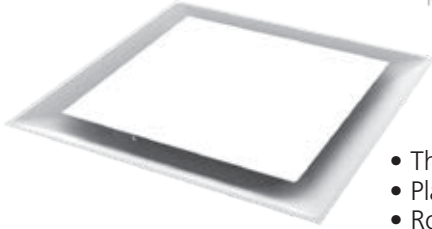
LIST OF MANUFACTURERS	
	33

TERMS AND CONDITIONS	
	34



Air Distribution

OMNI



- The industry standard
- Plaque face
- Round neck

OMNI	6"	8"	10"	12"	14"	15"
12x12 Lay-In	■	■				
20x20 Lay-In	■	■	■			
24x24 Lay-In	■	■	■	■	■	■
24x24 IB Insulated	■	■	■	■	■	
24x24 NT Lay-In	■	■	■	■	■	
24x24 AA Alum. Lay-In	■	■	■	■	■	

- 360° discharge pattern
- White finish
- TRM rapid mound frame available
- DB directional blow clips available
- AA Alum is MRI compatible

TMS/TMSA

TMSA has adjustable vanes to vary the discharge pattern



- The industry standard
- Louvered face
- Round neck

TMS	6"	8"	10"	12"	14"	15"
12x12 Lay-In	■	■				
20x20 Lay-In	■	■	■			
24x24 Lay-In	■	■	■	■	■	■
24x24 NT Lay-In	■	■	■	■		

TMSA	6"	8"	10"	12"	14"
12x12 Lay-In	■	■			
24x24 Lay-In	■	■	■	■	■

- 360° discharge pattern
- White finish
- Excellent choice for VAV
- TRM rapid mount frame available

R-OMNI



R-OMNI Surface Mount	
Neck Size	Outside Diameter
06" ■	13.5
08" ■	18
10" ■	22.5
12" ■	27

- Fixed center plaque
- Round neck

LIMA 150 Diffuser

155 Damper



150



155

Sizes: 6" 8" 10" 12"

TMR/TMRA



TMR Surface Mount	
Neck Size	Outside Diameter
06" ■	11.125
08" ■	14.75
10" ■	18.25
12" ■	22
14" ■	26
16" ■	29

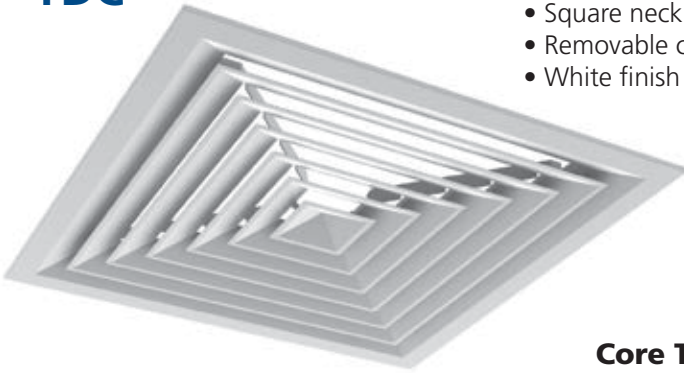
- 3 cones / 2 positions
- White finish
- Round neck

TMRA Surface Mount	
Neck Size	Outside Diameter
06" ■	13.5
08" ■	18
10" ■	22.5
12" ■	27
14" ■	31.5
16" ■	36

- 4 cones / type 3 rotating
- White finish
- Round neck



TDC



- Louvered face
- Square neck
- Removable core
- White finish

Neck Size	Throw Patterns				
	S1	S2	G2	A3	A4
06 x 06	■	■	■	■	■
09 x 09	■	■	■	■	■
12 x 12	■	■	■	■	■
15 x 15	■	■	■	■	■
18 x 18	■	■	■	■	■

Border Types

- TDC Type 1 Surface Mount-Flush Mount Face
- TDC Type 3 24 x 24 Lay-In Module
- TDC Type 6 Surface Mount-Beveled Drop Face

Core Throw Patterns



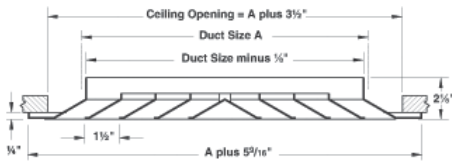
S1

S2

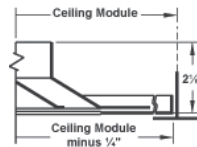
G2

A3

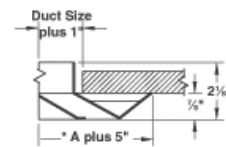
A4



TDC 1



TDC 3



TDC 6

Accessories



SR

- Square to round for TDC
- 24 gauge
- 3" deep
- Flat black interior finish

Sizes	6	8	10	12	14	16	18
06 x 06	■						
09 x 09	■	■					
12 x 12	■	■	■	■			
15 x 15			■	■	■		
18 x 18		■	■	■	■	■	■



D-100

- Gang operated radial blades
 - Fits round neck ceiling diffusers
- Sizes:** 6", 8", 10", 12", 14"



AG-95

- Opposed blade damper
 - Fits TDC and PAR returns
- Sizes:** 6" x 6", 9" x 9", 12" x 12", 15" x 15", 18" x 18"



D-75

- Opposed blade damper
 - Fits round neck ceiling diffusers
- Sizes:** 6", 8", 10", 12"



TRM

- Rapid Mount Frame
 - White finish
- Sizes:** 12" x 12", 24" x 12", 20" x 20", 24" x 24", 48" x 24"



AG-85

- Opposed blade damper
 - Fits round neck ceiling diffusers
- Sizes:** 14", 15", 16"



EG

- Equalizing Grid
 - Fits round neck ceiling diffusers
- Sizes:** 6", 8", 10", 12", 14"



Modular Slot Diffusers & Plenums

ML-38 Modular Slot Diffuser

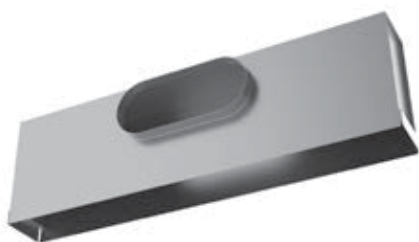


- 3/4" slot width
- Adjustable pattern controller
- 2A border for concealed mounting or lay-in
- White finish
- Includes end borders

Length	Slots
23" *	2
47" **	2
47" **	3
47" **	4
72"	2

* Fits 2' lay-in grid, ** Fits 4' lay-in grid

MPI-38 Insulated Plenum



- For use with ML-38 slot diffuser
- 2A border
- Internal insulation

Size	Inlet	Height
2' x 2 slot	8"	8"
4' x 2 slot	8"	8"
4' x 3 slot	10"	11"
4' x 4 slot	12"	11"

ML-39 Modular Slot Diffuser

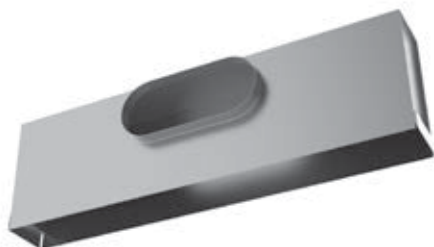


- 1" slot width
- Adjustable pattern controller
- 2A border for concealed mounting or lay-in
- White finish
- Includes end borders

Length	Slots
23" *	2
47" **	2
47" **	3
47" **	4
72"	2

* Fits 2' lay-in grid ** Fits 4' lay-in grid

MPI-39 Insulated Plenum

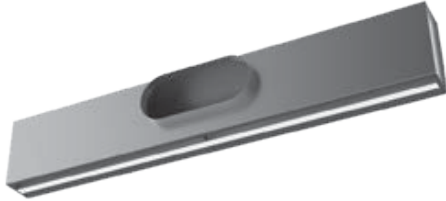


- For use with ML-39 slot diffuser
- 2A border
- Internal insulation

Size	Inlet	Height
2' x 2 slot	8"	8"
4' x 2 slot	8"	8"
4' x 3 slot	10"	11"
4' x 4 slot	12"	11"



Titus Slot Diffusers

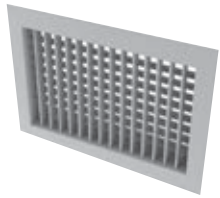


TBDI-80

- Internal insulation
- #4 White Center tee included
- Black Interior
- Adjustable air pattern
- 1" slot width
- PF-TBD plaster frame available:
2' x 2 slot, 4' x 2 slot, 4' x 4 slot

Lay-in Style			
Length	Slots	Inlet	Height
2'	2	8"	8"
4'	2	8"	8"
4'	4	12"	11"

Titus Supply Registers



300RS

Steel
Double
Deflection
with OBD

06x04	06x06	08x04	08x06	08x08	10x04	10x06	10x08	10x10
12x04	12x06	12x08	12x10	12x12	14x04	14x06	14x08	14x10
14x12	14x14	16x04	16x06	16x08	16x10	16x12	16x16	18x04
18x06	18x08	18x10	18x12	18x16	18x18	20x04	20x06	20x08
20x10	20x12	22x10	*22x10	*22x22	24x04	24x06	24x08	24x10
24x12	24x14	24x16	24x24	30x06	30x08	30x10	30x12	30x18
30x24	36x06	36x08	36x10	36x12	36x18	36x24	48x12	

*(22x10 and 22x22 have no screwholes for lay-in applications)



US300FS

Alum. Spiral Duct
Mount with Damper
Double Deflection
#01 Alum. Paint
(CFM listed
at 800 fpm)

Grille	12x03	14x03	20x03	12x04	14x04	16x04	20x04	12x06
Spiral	8-36"	8-36"	8-36"	10-36"	10-36"	10-36"	10-36"	12-36"
CFM	144	168	240	200	216	272	344	312
Grille	14x06	16x06	18x06	24x06	14x08	16x08	20x08	
Spiral	12-36"	12-36"	12-36"	12-36"	14-36"	14-36"	14-36"	
CFM	344	416	504	700	528	600	768	

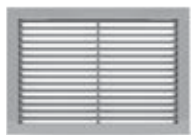


Titus Return Grilles



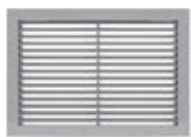
350RL
Steel
Fixed Blade Return
Surface Mount
3/4" Spacing

06x04	06x06	08x04	08x06	08x08	10x04	10x06	10x08	10x10	12x04
12x06	12x08	12x10	12x12	14x06	14x08	14x10	14x12	14x14	16x06
16x08	16x10	16x12	16x14	16x16	18x06	18x08	18x10	18x12	18x18
20x06	20x10	20x12	20x20	22x10	22x22	24x06	24x08	24x10	24x12
24x14	24x16	24x18	24x24	30x6	30x8	30x10	30x12	30x18	30x24
30x30	36x12	36x18	36x24	36x36	48x12	48x24	48x36	48x48	



350RL
Steel
Fixed Blade Return
Lay-in
No Screw Holes
3/4" Spacing

10x10	18x18	22x06	22x10	22x22	46x22
(12x12	(20x20	(24x08	(24x12	(24x24	(48x24
module)	module)	module)	module)	module)	module)



350FL
Aluminum
Fixed Blade Return
Surface Mount
3/4" Spacing

06x06	08x08	10x10	12x12
14x14	16x16	18x18	24x24



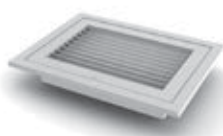
350FL
Aluminum
Fixed Blade Return
Lay-in
No Screw Holes
3/4" Spacing

10x10	22x10	22x22
(12x12	(24x12	(24x24
module)	module)	module)



355RL
Steel
Fixed Blade Return
Lay-in
No Screw Holes
1/2" Spacing

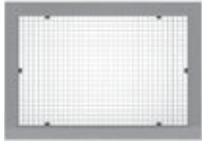
10x10	22x10	22x22
(12x12	(24x12	(24x24
module)	module)	module)



350RLF1
Steel
Filter Grille
Fixed Blade Return
Lay-in
3/4" Spacing

20x20 neck (24x24 module)
Accepts 20x20x1 filter





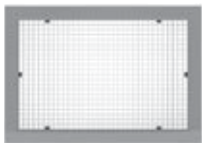
50F
Alum. Eggcrate
Surface Mount

06x06	08x08	10x10	12x12	14x14
16x16	18x18	20x20	24x12	24x24
48x24				



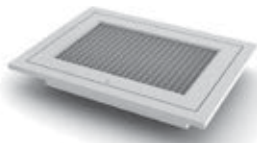
50F
Alum. Eggcrate
Lay-in
No Screw Holes

10x10 (12x12 module)	22x06 (24x08 module)	22x10 (24x12 module)	22x22 (24x24 module)	46x22 (48x24 module)
----------------------------	----------------------------	----------------------------	----------------------------	----------------------------



50F - NT
Alum. Eggcrate
Narrow-Tee
Lay-in
No Screw Holes

22x8 (24x10 module)	22x22 (24x24 module)
---------------------------	----------------------------



50FF
Filter Grille
Alum. Eggcrate
Lay-in

20x20 neck
(24x24 module)
Accepts 20x20x1 filter



45F
Alum. No-vision
Eggcrate
Lay-in
No Screw Holes

22x10 (24x12 module)	22x22 (24x24 module)
----------------------------	----------------------------



AG-15
Opposed Blade
Damper
Fits 350RL,
50F and 45F

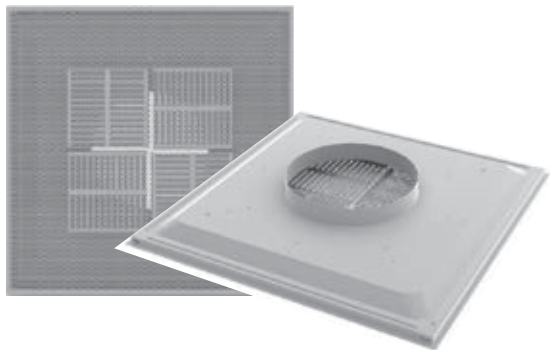
06x06	08x08	10x10	12x12
14x14	22x06	22x10	22x22



SR
Square to Round
Adapter

- 24 gauge
- 3" deep
- Flat black interior finish

Sizes	6	8	9	10	12	14	16	18	20
06 x 06	■								
08 x 08	■	■							
09 x 09	■	■							
10 x 10	■	■		■					
12 x 12	■	■		■	■				
14 x 14	■	■		■	■	■			
15 x 15				■	■	■			
18 x 18		■		■	■	■	■	■	
20 x 20						■	■	■	
22 x 06	■	■							
22 x 10	■	■		■	■				
22 x 22	■	■		■	■	■	■	■	■



PAS Perforated Supply

- Adjustable pattern controllers on face
- Perforated flush face
- Steel
- White finish

Supply

PAS	6"	8"	10"	12"	14"	16"
24 x 24 Lay-In	■	■	■	■	■	■



PAR Perforated Return

- White finish
- Steel

Return

PAR	Neck Size	
12 x 12 Lay-In	10 x 10	■
24 x 12 Lay-In	22 x 10	■
24 x 24 Lay-In	22 x 22	■
48 x 24 Lay-In	46 x 22	■

Plastic Diffusers

- Won't rust, fade, warp or corrode
- Heavy-duty plastic
- Bright white
- Looks just like steel



STR C

3-Core Diffuser



	6"	8"	10"	12"	14"
24 x 24 Lay-In	■	■	■	■	■

STR PQ

Plaque Diffuser



	6"	8"	10"	12"
24 x 24 Lay-In	■	■	■	■

STR ERFGW

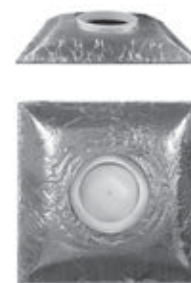
Eggcrate Hinged Filter Grille
20 x 20 Neck/24 x 24 Layin



	12"	14"	16"	18"	20"
Accepts 20 x 20 Square-to-Round	■	■	■	■	■

STR IB

Insulated Backpan
Fits Plastic Diffusers and Titus Diffusers



24 x 24 with cut-outs for round necks



Young Regulator

Motorized Dampers



4011 2-Position Damper

- 24v 15-second motor
- Powered open/spring closed
- Field convertible to powered closed
- Built-in motor stop for minimum air
- Whisper quiet operation
- Uses T-312-CE Stat



4075-IF Auto-Changeover Damper

- 24v 90 second motor
- Low leakage seals
- 3-wire modulating motor
- Duct temp sensor
- Auto changeover
- Terminal board with relays
- Uses T720-IF Digital Stat

Accessories



T312CE Thermostat

- Dead band analog type
- For use with 4011



T 720 IF

- Digital Stat
- Auto changeover
- Use with 4075-IF



3035 Transformer

- 120/24 volt
- 40VA
- For use with 4011, 4075



Alpha Controller

Titus Alpha Digital VAV Controller/Actuator for Single Duct VAV Boxes and Fan Powered VAV Boxes

- For stand-alone and network applications
- Integrates universally with all BACnet protocols
- Single duct with auxiliary heat contacts
- Preconfigured at factory
- Easy to commission through wall sensor
- No software required for commissioning
- One piece design: integrated controller, sensor, actuator and communication



Each Alpha Controller Package Includes:

- Alpha Controller/DT23 Actuator prewired in steel control enclosure box
- Prewired 120/24V transformer
- Prewired disconnect switch
- Commissioning capable wall sensor
- 50' CAT 5 cable to connect Alpha to wall sensor
- Airflow pickup tubes



**Bac-8005-03
Controller**



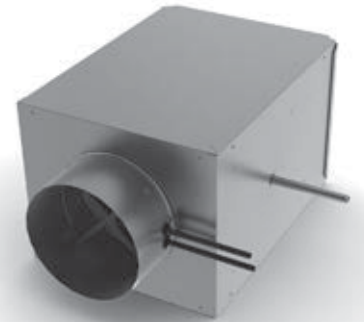
**STE-8001
Wall Sensor**

Single Duct VAV Boxes

DESV Bare Box

- Bare box
- Ecoshield 1/2" liner, Fibre Free or Ecoshield 1" Foil Face liner
- Multi point center averaging velocity sensor
- 1/2" diameter extended damper shaft

Inlet Size	Max CFM
06"	500
08"	900
10"	1400
12"	2000
14"	3000
16"	4000
24" x 16"	8000



DECV Bare Box

- Bare box
- Multi point center averaging velocity sensor
- 1/2" diameter extended damper shaft
- Tight close off damper

Inlet Size	Max CFM
06"	500
08"	900
10"	1400
12"	2000
14"	3000
16"	4000





VAV Box Accessories



PESV Pneumatic Control Package

- Includes Mounting Bracket for DESV Box
- Pressure independent
- Direct Acting or Reverse Acting
- Pneumatic PT01 actuator included
- Exclusive PT05 Titus II controller, field adjustable to be compatible with control system
- Operates on a control air pressure of 0 to 15 PSI
- Maximum and minimum CFM easily calibrated
- Thermostat not included
- Ready to install



1 & 2 Row Hot Water Coils

- Copper tubes
- 10 aluminum fins per inch
- Coil is housed in sheet metal sleeve
- Slip and drive cleat duct connections

Piping Connections:

- 1 Row: 6 & 8 1/2"
10 & up 7/8"
- 2 Row: 6 & 8 5/8"
10 & up 7/8"

Inlet Size	width	height	depth
06"	12	8	5
08"	12	10	5
10"	14	12.5	5
12"	16	15	5
14"	20	17.5	7.5
16"	24	18	7.5
24" x 16"	38	18	5



DESV Control Enclosure for DESV, DECV



Titus II Pneumatic Controller



PESV Actuator Part 100585-01 5-10 psi



Titus II Bracket



Fire Dampers For Use in Static Systems

- Available in models IBD60 & IBD2
- Vertical & horizontal closure spring operation
- 165° F Fusible Link
- Static applications
- Meets all UL & NFPA criteria for primary fire dampers installed in walls and floors with fire resistance ratings of less than 3 hours (1 1/2 to 2 hours)
- Not for use in wood truss ceiling applications. See CFD7T / CFDR7T.
- Each damper is marked with a 1-1/2 hour UL 555 classified fire damper label and the maximum air flow and static pressure limits

Model IBD60 Integral Sleeve

16" Length Sleeve, 20 Gauge Galvanized Steel

Models IBD60 or IBD2	
Style A Sizes Blades IN airstream	
06 x 06	16 x 14
08 x 06	16 x 16
08 x 08	18 x 08
10 x 06	18 x 10
10 x 08	18 x 12
10 x 10	18 x 16
12 x 06	18 x 18
12 x 08	20 x 10
12 x 10	20 x 12
12 x 12	20 x 20
14 x 06	22 x 22
14 x 08	24 x 08
14 x 10	24 x 10
14 x 12	24 x 12
14 x 14	24 x 16
16 x 08	24 x 18
16 x 10	24 x 24
16 x 12	

Style R Sizes Blades IN airstream	
06"	12"
08"	14"
10"	16"

FDR25 Sizes	
06"	12"
08"	14"
10"	



Style A



Style R

Includes: Picture Frame Mounting Angles

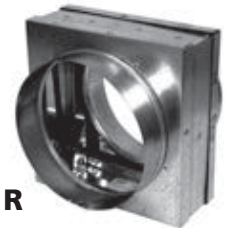
- 16 gauge angles are factory supplied, two per damper, with pre-punched holes on 2" centers for ease in fastener spacing
- Installation instructions comply with Underwriters Laboratories safety standard 555 U.L. File #R5531
- Static applications, not dynamic

Model IBD2

- No sleeve
- These dampers require sleeves and retaining angles by others for UL approved installations
- Static applications, not dynamic



Style A



Style R

Model FDR25

- Round fire damper
- Vertical / Horizontal mount
- 17", 20 gauge integral sleeve
- Retaining angles
- 212°F fusible link
- Dynamically rated



Fusible Links

- Type A: 165° & 212°F
- Type B: 165° & 212°F



(shown close to actual size)



Ceiling Radiation Dampers



CFDR7T

- Truss mount
- For through penetrations of wood truss assemblies

Includes:

- Extended frame
- 3" Bottom extension
- Retaining ring
- 1.5" x 28 ga angles
- 165°F Fusible link
- Undersized 1/8"

Sizes		
6"	8"	10"
12"	14"	



CFDR5

- Neck mount
- For necks of diffusers where diffuser is mounted at the rated assembly

Includes:

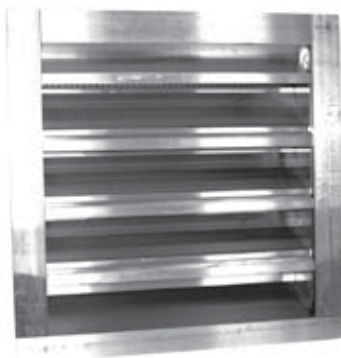
- Extended frame
- TIB thermal insulated blanket
- 165°F Fusible link
- Undersized 1/4"

Sizes		
6"	8"	10"
12"		



Louvers and Brick Vents

Louvers



- 4" deep
- Extruded aluminum
- Drainable blade
- 1/2" x .063" alum. birdscreen
- Front flange frame
- Mill finish

GFL800D FF

Size (w x h)	Free Area (ft2)	CFM @800 FPM
12 x 12	.17	136
12 x 18	.43	344
16 x 16	.50	400
18 x 12	.27	216
24 x 12	.38	304
24 x 18	.95	760
24 x 24	1.52	1216

Brick Vents



Model	Size (w x h)
EX 157	15-5/8 x 7-3/4

- Nominal size 16 x 8
- Extruded aluminum
- 4" deep
- Insect screen
- 40% free area
- Clear anodized finish



RUSKIN Access Doors
AUTHORITY IN AIR CONTROL

ADC24 Cam Lock Duct Mounted Access Doors



- Double cam removable type
- 22 gauge galvanized steel
- Insulated double skin
- Foam gasket seal
- Outside frame size fits hole
1 1/8" smaller than door size

Sizes	
06 x 06	16 x 16
08 x 08	18 x 18
10 x 10	20 x 20
12 x 12	24 x 12
14 x 14	24 x 24

ADH24 Hinged Duct Mounted Access Doors



- Continuous piano hinge
- 22 gauge galvanized steel
- Insulated double skin
- Foam gasket seal
- Outside frame size fits hole
1 1/8" smaller than door size

Sizes	
06 x 06	16 x 16
08 x 08	18 x 18
10 x 10	20 x 20
12 x 12	24 x 24
14 x 14	

ADR Access Door For Round Ductwork



- Galvanized steel
- Cellular sponge gasket
- Self-adhesive template
for ease in lay-out
- Two door handles

Model	Size	Fit Round Ducts
ADR1	10 x 06	6, 8, 10, 12, 14, 16
ADR2	16 x 12	18, 20, 22, 24

ADF Oval Access Door For Flat Ductwork



- Galvanized steel
- Cellular sponge gasket
- Two door handles

Sizes	
10 x 06	16 x 12

ADFKE Oval Access Door For Grease Duct



- 16 gage black iron
- Ceramic fiber rope gasket
- Two door handles

Sizes	
10 x 06	16 x 12



Architectural Access Doors

TM Universal Flush Access Door for Walls and Ceilings



- 14 gauge galvanized steel frame
- Continuous concealed hinge
- Screw driver operated cam latch
- White powder coat

Rough opening size = door size + 1/4"

Sizes	
08 x 08	16 x 16
10 x 10	18 x 18
12 x 12	24 x 24
14 x 14	

WB Drywall Access Door for Walls and Ceilings



- Drywall bead frame
- 16 gauge galvanized steel frame
- Continuous concealed hinge
- Screw driver operated cam latch
- White powder coat

Rough opening size = door size + 1/2"

Sizes	
08 x 08	16 x 16
10 x 10	18 x 18
12 x 12	24 x 24
14 x 14	

FD Fire Rated Access Door for Walls and Ceilings

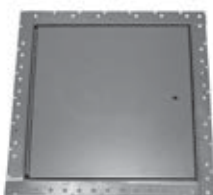


- UL 1-½ hour "B" label
- 14 gauge galvanized steel frame
- 2" mineral fiber insulation
- Continuous concealed hinge
- Key operated cam latch
- White powder coat

Rough opening size = door size + 1/2"

Sizes	
08 x 08	16 x 16
10 x 10	18 x 18
12 x 12	24 x 24
14 x 14	

FD WB Fire Rated Access Door with Drywall Bead



- Drywall bead frame
- 16 gauge galvanized steel frame
- Continuous concealed hinge
- Screw driver operated cam latch
- White powder coat

Rough opening size = door size + 3/8"

Sizes	
24 x 24	



Snaplock Pipe & Fittings

26 Gauge Galvanized Pipe and Fittings




				
1008 5' Pipe Lengths 3, 4, 5, 6, 7, 8, 9, 10, 12, 14, 16	1008 3' & 4' Pipe Lengths 18" x 4' 20" x 3'	1008 2' Pipe Lengths 3, 4, 6, 8, 10, 12, 14	1005 90° Elbow 3, 4, 5, 6, 7, 8, 9, 10, 12, 14, 16, 18, 20, 22, 24	1006 45° Elbow 6, 8, 10, 12, 14, 16
				
1067 Double Quad Damper 4, 5, 6, 7, 8, 9, 10, 12, 14, 16, 18	1064 End Cap 4, 5, 6, 7, 8, 9, 10, 12, 14, 16, 18, 20, 22, 24	1060 Tee 4, 6, 8, 10, 12, 14, 16, 18, 20	1061 Wye 4 x 4 x 4, 6 x 6 x 6, 8 x 6 x 6, 10 x 8 x 8, 12 x 10 x 10	97 Start Collar 3, 4, 5, 6, 7, 8, 9, 10, 12, 14, 16, 18, 20, 22, 24
				
SC Scoop & Damper 6, 8, 10, 12, 14, 16	SCNS Stick-on with Damper 4, 6, 8, 10, 12, 14, 16, 18	SCNS-ND Stick-on No Damper 4, 6, 8, 10, 12, 14, 16, 18, 20	EP1 Conical Hammerlock 6, 8, 10, 12, 14	97LS Long Start Collar 4, 6, 8, 10, 12, 14, 16, 18
				
ATDBM Conical With Damper 6, 8, 10, 12, 14, 16 Also ATDBM-ND	ATDRP 90° Saddle With Damper 4, 6, 8, 10, 12, 14, 16	ATTRP-ND 90° Saddle No Damper 4, 6, 8, 10, 12, 14, 16	ATDRP45 45° Saddle With Damper 4, 6, 8, 10, 12, 14,	ATTRP45-ND 45° Saddle No Damper 6, 8

NOTE: 18" thru 24" Elbows are 24 Gauge.


	EP-13 Rectangular Takeoff 6": 7 x 6 8": 9 x 8 10": 12 x 10 12": 14 x 12 14": 16 x 14		3300D Rectangular Opening Dimensions 4": 10 x 6 8": 12 x 6 12": 18 x 8.5 6": 12 x 6 9": 15 x 6 14": 20 x 9.5 7": 12 x 6 10": 16 x 7 16": 24 x 11 13" tall. Opening sizes listed. Add 1" flange. Also available with no damper 3300D-ND
---	--	---	--




26 Gauge Galvanized Takeoffs with 2" Standoff



1067 SO
4, 5, 6, 8, 10,
12, 14, 16, 18



1259 SO
4, 6, 8, 10, 12,
14, 16, 18



SC SO
6, 8, 10, 12, 14, 16



SCNS SO
6, 8, 10, 12, 14, 16



3300D SO
4, 6, 7, 8, 9, 10, 12,
14, 16



ATDRP SO
4, 6, 8, 10, 12, 14



ATDBM SO
6, 8, 10, 12, 14

26 Gauge Galvanized Reducers



**1062 Tapered
Concentric
Reducer**

Sizes	3	4	5	6	7	8	9	10	12	14	16	18	20	22
04 x	■													
05 x	■	■												
06 x	■	■	■											
07 x				■										
08 x	■	■	■	■	■									
09 x				■		■								
10 x		■		■		■	■							
12 x		■		■		■	■	■						
14 x		■		■		■		■	■					
16 x				■		■		■	■	■				
18 x								■	■	■	■			
20 x								■	■	■	■	■		
22 x												■	■	■
24 x											■	■	■	■
26 x														■



**RTR
Short Reducer**

Sizes	6	8	10	12	
08 x	■				
10 x			■		
12 x				■	
14 x					■



**SR Square to
Round Adapters**

Sizes	6	8	9	10	12	14	16	18	20
06 x 06	■								
08 x 08	■	■							
09 x 09	■	■							
10 x 10	■	■		■					
12 x 12	■	■		■	■				
15 x 15				■	■	■			
18 x 18		■		■	■	■	■	■	
20 x 20						■	■	■	
22 x 06	■	■							
22 x 10	■	■		■	■				
22 x 22	■	■		■	■	■	■	■	■



26 Gauge Aluminum Pipe and Fittings



1008AL
5' Pipe Lengths
4



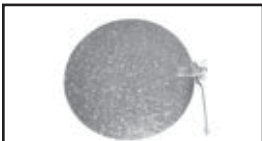
1008AL
4' Pipe Lengths
6, 8, 10, 12



1008AL
2' Pipe Lengths
14



1005AL
Elbow
4, 6, 8, 10,
12, 14



1067AL
Damper
4, 6, 8, 10, 12, 14



1062AL
Reducer
6 x 4, 8 x 6, 10 x 8,
12 x 10



97AL
Start Collar
4, 6, 8, 10, 12



SCNSNDAL
Stick-on with
Damper
4, 6, 8, 10, 12, 14



3300DAL
Rect. To Round
6, 8, 10, 12

26 Gauge 304 Stainless Pipe and Fittings



1008SS
3' Pipe Lengths
4, 6, 8, 10, 12



1005SS
Elbow
4, 6, 8, 10, 12



97SS
Start Collar
4, 6, 8, 10, 12, 14



1062SS
8 x 6, 10 x 8,
12 x 10

30 Gauge Galvanized Pipe and Fittings




1008 30
5' Pipe Lengths
3, 4, 6, 8



1005 30
90° Elbow
3, 4, 6, 8




Singlewall Roof and Wall Terminations




**TCF Flat Roofing
12" High Flashing**
4, 6, 8, 10, 12, 14,
16, 18, 20



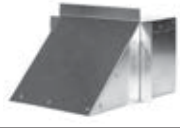
**TCFA Adjustable
Roof Flashing**
4, 6, 8, 10, 12, 14
up to 6/12 pitch




SCSW Storm Collar
4, 6, 8, 10, 12,
14, 16, 18, 20



RC Rain Cap
4, 6, 8, 10, 12,
14, 16, 18, 20



WCG Wall Cap
WCG-2 = 8 1/8 x 6-1/8
WCG-6 = 10-5/8 x 4-15/16
WCG-8 = 20-1/8 x 6-1/8
WCG-9 = 24-3/8 x 6-7/8



**WC
Wall Cap**
3, 4, 6, 8, 10, 12



**639
Wall Cap**
10 x 3-1/4



**636
Roof Jack**
3" & 4"



**634
Roof Jack**
8"



**BDD
Backdraft Damper**
4, 6, 8, 10, 12

Sheet Metal Accessories




SM Band 20 GA
10' long x 1" wide
bundle of 10
20 GA



**Band 261
Hanger Strap**
100' x 1", 26 GA

Cable Hangers



Gripple
• Package of 10 includes:
10 cables with loop
and 10 gripples

Size	Length	Load
Gripple #2	10'	100#
Gripple #2	15'	100#
Gripple #2	20'	100#
Gripple #2	30'	100#
Gripple #3	10'	200#
Gripple #3	15'	200#
Gripple #3	20'	200#
Gripple #3	30'	200#

Gripple Cutter












- For wire rope





Spiral - Pipe, Fittings and Accessories

Model numbers beginning with 'SS' are gasketed fittings

					
Spiral Pipe 10' Lengths 3, 4, 5, 6, 7, 8, 9, 10, 12, 14, 16, 18, 20, 22, 24, 26	E90/SS90 90° Stitched Welded Elbow 1.5 and 1.0 radius 3, 4	E90/SS90 90° 5 piece Gorelock Elbow 1.5 and 1.0 radius 5, 6, 7, 8, 9, 10, 12, 14, 16 18, 20, 22, 24	E45/SS45 45° Stitched Welded Elbow 3, 4	E45/SS45 45° 3 piece Gorelock Elbow 5, 6, 7, 8, 9, 10, 12, 14, 16, 18, 20, 22, 24	CPM/SSCPM Male Coupler 3, 4, 5, 6, 7, 8, 9, 10, 12, 14, 16, 18, 20, 22, 24, 26
					
PLUG/SSPLUG 4, 6, 8, 10, 12, 14, 16, 18, 20, 22, 24	FG Full Gate 3, 4, 5, 6, 8, 10, 12, 14, 16, 18	SSBM Bellmouth 3, 4, 5, 6, 7, 8, 9, 10, 12, 14, 16, 18, 20, 22, 24	SSTEE Tee 4, 6, 8, 10, 12, 14, 16, 18, 20, 24	ADR1/ADR2 Round Access Door 6, 8, 10, 12, 14, 16, 18, 20	



RED/SSRED
Concentric
Reducer

Sizes	3	4	5	6	7	8	9	10	12	14	16	18	20	22
4x	■													
6x	■	■	■											
8x		■	■	■	■									
9x						■								
10x				■		■	■							
12x				■		■		■						
14x				■		■		■	■					
16x				■		■		■	■	■				
18x				■		■		■	■	■	■			
20x									■	■	■	■		
22x											■	■	■	
24x											■	■	■	■



ST/SSST
90° Saddle Tap

Sizes	6	8	10	12	14	16	18	20	22	24
4 on	■	■	■	■						
6 on	■	■	■	■	■	■	■	■	■	■
8 on		■	■	■	■	■	■	■		
10 on			■	■	■	■	■	■	■	■
12 on				■	■	■	■	■		
14 on					■	■	■	■	■	■
16 on						■	■	■	■	■
18 on							■	■	■	■












Jeremias[®]
EXHAUST SYSTEMS

444 Stainless Dual Wall: 6" & 8"
UL1738 Rated Dual Wall Stainless Steel Gas Vent
Approved for Category II, III, IV Appliances

					
L Pipe 12", 18", 24", 36", 48"	24AL Adjustable Length	45 EL 45° Elbow	87EL 87° Elbow	87BT 87° Boot Tee	RCOS Raw Collar Adapter - Outside
					
RCIS Raw Collar Adapter - Inside	LSB Light Support Band	APS Anchor Plate Support	WRC Rain Cap	SCCF Storm Collar	FCF Flat Cone Flashing
					
OTS Open Termination with Screen	SWT Wall Thimble	UDL Universal Drain Length	DCB Drain Tee Cap Bottom	10DK-050 Drain Kit with 1/2" hose	GV-Lube Lubricant for Assembly

SELKIRK B-Vent Pipe & Fittings

																																																												
RV Pipe 3, 4, 5, 6, 7, 8	RV Adj. Length 3, 4, 5, 6, 7, 8	90 90° Adj. Elbow 3, 4, 5, 6, 7, 8	T Tee 3, 4, 5, 6, 7, 8	TC Tee Cap 3, 4, 5, 6	TCF Flat Roof Flashing 3, 4, 5, 6, 7, 8, 10, 12																																																							
			<table border="1"> <thead> <tr> <th rowspan="2">Pipe Description</th> <th colspan="6">Type RV</th> </tr> <tr> <th>3"</th> <th>4"</th> <th>5"</th> <th>6"</th> <th>7"</th> <th>8"</th> </tr> </thead> <tbody> <tr> <td>1' Length</td> <td>■</td> <td>■</td> <td></td> <td>■</td> <td></td> <td>■</td> </tr> <tr> <td>2' Length</td> <td>■</td> <td>■</td> <td>■</td> <td>■</td> <td></td> <td>■</td> </tr> <tr> <td>3' Length</td> <td>■</td> <td>■</td> <td>■</td> <td>■</td> <td></td> <td>■</td> </tr> <tr> <td>4' Length</td> <td>■</td> <td>■</td> <td>■</td> <td>■</td> <td></td> <td>■</td> </tr> <tr> <td>5' Length</td> <td>■</td> <td>■</td> <td>■</td> <td>■</td> <td>■</td> <td>■</td> </tr> <tr> <td>12" Adj. Length</td> <td>■</td> <td>■</td> <td>■</td> <td>■</td> <td>■</td> <td>■</td> </tr> </tbody> </table>			Pipe Description	Type RV						3"	4"	5"	6"	7"	8"	1' Length	■	■		■		■	2' Length	■	■	■	■		■	3' Length	■	■	■	■		■	4' Length	■	■	■	■		■	5' Length	■	■	■	■	■	■	12" Adj. Length	■	■	■	■	■	■
Pipe Description	Type RV																																																											
	3"	4"				5"	6"	7"	8"																																																			
1' Length	■	■					■		■																																																			
2' Length	■	■				■	■		■																																																			
3' Length	■	■	■	■		■																																																						
4' Length	■	■	■	■		■																																																						
5' Length	■	■	■	■	■	■																																																						
12" Adj. Length	■	■	■	■	■	■																																																						
TCFA Adj. Roof Flashing 4, 5, 6, 7, 8	SC Storm Collar 3, 4, 5, 6, 7, 8	Top Top 3, 4, 5, 6, 7, 8																																																										



Flexible Duct

Insulated Flex Duct

CLE = Cleveland
COL = Columbus

Atco

IFA 070 Gray - CLE

- 25' length • R4.2
- UL class 1 air duct
- Recommended operating pressures
6" w.g. positive 4"-12" diameter
4" w.g. positive 14"-20" diameter
- Sizes: 4,5,6,7,8,9,10,12,14,16,18,20



Atco

IFA 030 Silver - CLE

- 25' length • R4.2
- UL class 1 air duct
- Recommended operating pressures
6" w.g. positive 4"-12" diameter
4" w.g. positive 14"-20" diameter
- Sizes: 4,6,8,10,12,14,16,18,20



Thermaflex

KM Silver - COL

- 25' length • R6.0
- UL class 1 air duct
- Recommended operating pressures
10" w.g. positive 4"-16" diameter
6" w.g. positive 18"-20" diameter
- Sizes: 4,5,6,7,8,9,10,12,14,16,18,20



Atco

IFA 076 R6 Gray - CLE

- 25' length • R6.0
- UL class 1 air duct
- Recommended operating pressures
6" w.g. positive 4"-12" diameter
4" w.g. positive 14"-20" diameter
- Sizes: 6,8,10,12,14



Atco

IFA 078 R8 Gray - CLE

- 25' length • R8.0
- UL class 1 air duct
- Recommended operating pressures
6" w.g. positive 4"-12" diameter
4" w.g. positive 14"-20" diameter
- Sizes: 6,8,10,12



Non-Insulated Flex Duct

Atco

NIF 050 - CLE

- 25' length
- UL class 1 air duct
- Recommended operating pressures
6" w.g. positive 4"-12" diameter
4" w.g. positive 14"-20" diameter
- Sizes: 3,4,5,6,7,8,9,10,12,14,16,18,20



Thermaflex

MC - COL

- 25' length
- UL class 1 air duct
- Recommended operating pressures
10" w.g. positive 4"-16" diameter
6" w.g. positive 18"-20" diameter
- Sizes: 4,5,6,7,8,9,10,12,14,16,18



Insulation Sleeves

Atco

010 Silver - CLE

- 5' length • R4.2
- Fiberglass insulation
blanket in metalized polyester jacket
- Sizes: 6,8,10,12,14,16



Atco

011 Gray - CLE

- 5' length • R4.2
- Fiberglass insulation
blanket in gray polyester jacket
- Sizes: 4,5,6,7,8,10,12,14,16



Thermaflex

M Silver - COL

- 5' length • R6.0
- Fiberglass insulation
blanket in metalized polyester jacket
- Sizes: 4,5,6,8,10,12,14,16,18



General Service Flex Duct

U-Nova

Model ULOK100 - Black

- 10' length
- Polyester fabric
- Neoprene coating
- Sizes: 2,3,4,5,6,7,8,10,12,14,16
- Compression ratio 6:1
- Temperature range 45F to 250F



Duct Wrap

Model - Infoil








- 48" x 1-1/2"
- R 4.2
- 100' length





Sheetmetal Tools and Accessories



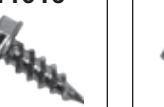





Snips

<p>Midwest</p>  <p>13962</p> <ul style="list-style-type: none"> • Snip • Cuts left • Red 	<p>Midwest</p>  <p>13966</p> <ul style="list-style-type: none"> • Snip • Cuts right • Green 	<p>Midwest</p>  <p>13970</p> <ul style="list-style-type: none"> • Snip • Cuts straight • Yellow 	<p>Midwest</p>  <p>13971</p> <ul style="list-style-type: none"> • Offset snip • Cuts left • Red 	<p>Midwest</p>  <p>13973</p> <ul style="list-style-type: none"> • Offset snip • Cuts right • Green 	<p>Midwest</p>  <p>13998</p> <ul style="list-style-type: none"> • Bulldog snip 	<p>Klenk</p>  <p>13974</p> <ul style="list-style-type: none"> • Pipe crimper • 5 blade
--	---	---	---	---	--	---








Tools, Chucks, Etc.

<p>Malco</p>  <p>SH3</p> <ul style="list-style-type: none"> • 21 oz tinner hammer • Fiberglass 	<p>R Whitney</p>  <p>5JR</p> <ul style="list-style-type: none"> • Hole punch 	<p>Gripple</p>  <p>Cutter</p> <ul style="list-style-type: none"> • For wire rope 	<p>Malco</p>  <p>TY4</p> <ul style="list-style-type: none"> • Manual nylon tie tool 	<p>Midwest</p>  <p>13992</p> <ul style="list-style-type: none"> • Notcher 		
<p>Fairmont</p>  <p>43000</p> <ul style="list-style-type: none"> • Fairmont tongs • Straight 	<p>Fairmont</p>  <p>43002</p> <ul style="list-style-type: none"> • Fairmont tongs • Offset 	<p>Shook</p>  <p>10224</p> <ul style="list-style-type: none"> • 1/4" hex drive 	<p>Shook</p>  <p>10230</p> <ul style="list-style-type: none"> • 5/16" hex drive 	<p>Shook</p>  <p>10068</p> <ul style="list-style-type: none"> • 1/4" x 6 Jiffy chuck 	<p>Shook</p>  <p>10114</p> <ul style="list-style-type: none"> • Chuck assortment 	<p>Malco</p>  <p>MSHC</p> <ul style="list-style-type: none"> • Reversible Chuck • 1/4 & 5/16

Screws

<p>10763</p>  <ul style="list-style-type: none"> • Zip Tip • #10 x 2" • 1/4" head • Qty 250 	<p>11006</p>  <ul style="list-style-type: none"> • Zip Tip • #7 x 1/2" • 1/4" head • Qty 1,000 	<p>11016</p>  <ul style="list-style-type: none"> • Zip Tip • #8 x 1/2" • 1/4" head • Qty 1,000 	<p>11026</p>  <ul style="list-style-type: none"> • Zip Tip • #8 x 3/4" • 1/4" head • Qty 1,000 	<p>11204</p>  <ul style="list-style-type: none"> • Bit Tip • #8 x 1/2" • 1/4" head • Qty 500 	<p>11224</p>  <ul style="list-style-type: none"> • Bit Tip • #8 x 3/4" • 1/4" head • Qty 500 	<p>11268</p>  <ul style="list-style-type: none"> • Bit Tip • #10 x 3/4" • 5/16" head • Qty 500 	<p>11284</p>  <ul style="list-style-type: none"> • Bit Tip • #10 x 1-1/2" • 5/16" head • Qty 250
---	--	--	--	---	--	--	--

Caulk, Sealants, Tape & Clamps

<p>Sila-Seal</p>  <p>SS Alum</p> <ul style="list-style-type: none"> • 100% Silicon • Aluminum • 10.3 oz/450 F 	<p>Sila-Seal</p>  <p>SS Clear</p> <ul style="list-style-type: none"> • 100% Silicon • Clear • 10.3 oz/450 F 	<p>Sila-Seal</p>  <p>SS Red</p> <ul style="list-style-type: none"> • Red • 600 F Hi temp • 10.3 oz 	<p>Great Lakes</p>  <p>398</p> <ul style="list-style-type: none"> • Silver duct tape • 2" x 60 yds. 	<p>Great Lakes</p>  <p>FSK</p> <ul style="list-style-type: none"> • Aluminum Skrim and Kraft • 3" x 50 yds. 	<p>Great Lakes</p>  <p>AFT</p> <ul style="list-style-type: none"> • Aluminum foil tape • 3" x 50 yds. 	<p>Great Lakes</p>  <p>324A</p> <ul style="list-style-type: none"> • Aluminum foil tape • Printed UL Listed • 2 1/2" x 60 yds. 	<p>Hardcast</p>  <p>AFG 1402</p> <ul style="list-style-type: none"> • Aluminum foil tape • 2 1/2" x 60 yds.
<p>Hardcast</p>  <p>DS321</p> <ul style="list-style-type: none"> • Water based duct seal • 1Gal. 	<p>Hardcast</p>  <p>DS321 Tube</p> <ul style="list-style-type: none"> • Water based duct seal • 11 oz. tube 	<p>Midwest</p>  <p>14226</p> <ul style="list-style-type: none"> • 2" brush • 12/carton 	<p>Cable Ties Unlimited</p>  <p>N36/N48</p> <ul style="list-style-type: none"> • Nylon clamp • N36" ≤ 10" • N48" ≤ 14" • Qty 50/bag • 10 bags/box 	<p>Ideal</p>  <p>56188</p> <ul style="list-style-type: none"> • Stainless steel clamp • 6-12" 			



the pate company® Roof Products

Roof Curbs 12" High and 18" High • Heavy Gauge Galvanized Steel • All Welded Seams • Treated Wood Nailers • Damper Holding Plate



12" high PC2A	18" high PC2A	Sizes		Cook Fan Sizes
		O.D.	I.D.	
16 x 16	16 x 16	16-1/2 x 16-1/2"	13-1/2 x 13-1/2"	70, 80, 90, 100, PR8
18 x 18	18 x 18	18-1/2 x 18-1/2"	15-1/2 x 15-1/2"	120, 135, PR12
20 x 20	20 x 20	20-1/2 x 20-1/2"	17-1/2 x 17-1/2"	
22 x 22	22 x 22	22-1/2 x 22-1/2"	19-1/2 x 19-1/2"	150, 165
26 x 26	26 x 26	26-1/2 x 26-1/2"	23-1/2 x 23-1/2"	PR16
28 x 28	28 x 28	28-1/2 x 28-1/2"	25-1/2 x 25-1/2"	180 thru 245
30 x 30	30 x 30	30-1/2 x 30-1/2"	27-1/2 x 27-1/2"	
34 x 34	34 x 34	34-1/2 x 34-1/2"	31-1/2 x 31-1/2"	270, 300
40 x 40	40 x 40	40-1/2 x 40-1/2"	37-1/2 x 37-1/2"	330, 365
46 x 46	46 x 46	46-1/2 x 46-1/2"	43-1/2 x 43-1/2"	402
52 x 52	52 x 52	52-1/2 x 52-1/2"	49-1/2 x 49-1/2"	445, 490
64 x 64	64 x 64	64-1/2 x 64-1/2"	61-1/2 x 61-1/2"	540

Pate Equipment Rails



ES2

- Straight
- 2 x 6 Nailer
- 12" high and 18" high

Lengths:				
1'	2'	3'	4'	5'
6'	8'	10'	12'	14'
Heights:				
12"			18"	

Heavy Gauge Galvanized Steel • All Welded Seams
• Treated Wood Nailers



Pipe Stands

1.5 Pipe

- Up to 1.5" pipe (inside diameter)
- 80 lb load

3-R Pipe

- Up to 3" pipe (inside diameter)
- 100 lb load

4-R/5-R Pipe

- Fixed height
- 4-R: up to 4" pipe
- 5-R: up to 5" pipe
- 150 lb load

RSS

- Cut-to-Length roof sleeper
- Plastic pipe and equipment support
- 36" long



Pate Hooded Pipe Curb Assemblies

PHA-2

- Aluminum construction
- Horizontal exit for pipes
- Removeable top cover
- 3-sided body with faceplate
- Anti-condensate coating
- Fits PCA-2 15 x 15 curb or MPCA-2 / MCPA-3 (12" high or 18" high)



Unit furnished with two faceplates: Blank and Quad-6 Boot.

Pipe Curbs & Curb Caps

- 12" High or 18" High • Heavy Gauge Galvanized Steel • All Welded Seams
- Treated Wood Nailers • 3 Available Roof Curb Sizes



PCA/PCC 2 (1 Cap)
15 x 15" O.D.
12" or 18" high curbs

- 6 curb caps available
- Rubber stepped boots
- Thermoplastic counterflashing
- Stainless steel clamps
- 220° continuous rating



MPCA 2 (2 Caps)
15 x 33-1/2" O.D.



MPCA 3 (3 Caps)
15 x 52" O.D.



PCC-1
Hole size
4@ 3-1/2"



PCC-2
Hole sizes
2@ 3-1/2"
& 1@ 6"



PCC-3
Hole sizes
2@ 3-1/2"
& 2@ 6"



PCC-4
Hole size
1@ 12"



PCC-5
Hole size
5@ 3-1/2"



PCC-6
Hole size
1@ 6"

Pate Pipe Flashing and Pipe Seals



Pipe Seal

Models	Pipe O.D. Range
Pipe Seal 03	1/2" to 2-7/8"
Pipe Seal 06	3" to 5-7/8"
Pipe Seal 12	6" to 11-1/2"
Quad-6	(4) 3/8" to 2"

- Spun aluminum base
- PVC stepped boot
- Stainless steel clamps
- Boots with clamps available separately:
RBC-3, RBC-6, RBC-12, QRBC



Quad-6



COOK Gemini Ceiling, Wall & Inline Blowers

- AMCA certified
- Integral backdraft damper
- 200-900 Series easily converts to inline



Blue shaded models are ENERGY STAR rated

GC 124-184



GC 220-960



GC 126-188

Model	RPM	CFM/Watt at 0.1 SP	0.0 SP		.100 SP		.125 SP		.250 SP		.375 SP		.500 SP		.625 SP		.750 SP		.875 SP		1.000 SP	
			CFM	Sones	CFM	Sones	CFM	Sones	CFM	Sones	CFM	Sones	CFM	Sones	CFM	Sones	CFM	Sones	CFM	Sones	CFM	Sones
★ GC-126	550	2.5	70	0.3	53	0.3	48	0.3	32	0.7												
★ GC-128	750	2.8	94	0.8	82	0.9	79	0.9	63	1.0	49	1.3	37	2.0								
★ GC-146	900	2.9	114	1.2	105	1.2	103	1.2	90	1.3	77	1.5	64	2.0	50	2.5	36	3.0				
★ GC-148	1075	3.1	152	2.5	144	2.5	142	2.5	132	2.5	120	2.5	108	3.0	94	3.0	78	3.5	56	3.5		
★ GC-166	1100	3.1	164	3.0	157	3.0	155	3.0	145	3.0	133	3.0	119	3.0	105	3.0	88	3.5	66	3.5	40	3.5
GC-168	1160	3.0	180	3.5	173	3.5	171	3.5	162	3.5	150	3.5	136	4.0	121	4.0	105	4.5	86	4.5	54	5.0
GC-186	1100	2.4	231	5.5	226	5.5	225	5.5	218	5.5	209	5.5	199	5.0	186	5.0	170	5.0	151	5.0	129	4.5
GC-188	1450	2.2	261	7.0	254	6.5	252	6.5	244	6.5	235	6.0	223	6.0	209	6.0	191	5.5	172	5.5	150	5.5

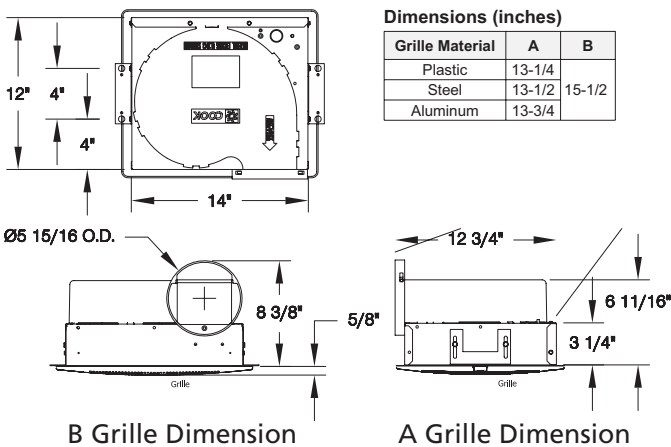
GC 222-960

★ GC-222	1332	4.8	130	1.5	115	1.3	111	1.3	85	1.2												
★ GC-242	1483	5.2	158	2.5	142	2.0	137	2.0	112	1.5	56	1.3										
GC-322	1600	3.2	204	4.0	191	4.0	187	4.0	165	3.5	139	3.5										
GC-342	1725	3.0	268	5.0	252	5.0	248	4.5	224	4.5	195	4.5	153	4.5								
GC-422	1500	2.8	308	4.0	298	4.0	295	4.0	282	4.0	267	4.5	250	4.0	223	4.0						
GC-522	1400	2.7	213	1.5	208	2.0	207	2.0	201	2.0	194	2.5										
GC-542	1600	2.9	391	5.5	380	5.5	377	5.5	361	5.5	340	5.5	314	5.5	285	5.0	249	4.5				
GC-622	1400	3.3	501	3.5	486	3.5	482	3.5	461	3.0	433	3.0	392	3.0	339	3.0						
GC-642	1500	3.1	602	5.0	582	4.5	576	4.5	548	4.5	512	4.0	471	4.0	421	3.5	350	3.5				
GC-720	1375	2.4	709	5.5	687	5.5	682	5.5	653	5.5	619	5.0	578	5.0	535	5.0	480	4.5	385	4.5		
GC-740	1625	2.2	852	7.0	823	7.0	815	7.0	775	6.5	727	6.0	672	6.0	616	5.0	552	4.5	463	4.0	303	3.5
GC-822	910	3.4	944	3.5	929	3.5	925	3.5	904	4.0	879	4.0	830	4.0								
GC-842	974	3.3	1187	5.0	1157	5.0	1149	5.0	1106	5.0	1043	4.5	905	4.5	637	3.5						
GC-862	1098	3.4	1433	7.0	1371	7.0	1355	6.5	1266	6.5	1149	5.5	995	5.0	775	4.0						
GC-920	925	3.6	1471	6.0	1427	6.0	1415	6.0	1356	6.0	1286	6.5	1190	6.5	1003	7.0						
GC-940	1040	3.5	1653	7.5	1582	7.5	1565	7.0	1481	7.0	1400	7.0	1293	7.0	1089	7.0						
GC-960	1112	3.4	1807	8.5	1716	8.0	1694	8.0	1588	7.5	1491	7.0	1386	7.0	1197	7.0						

★ ENERGY STAR certified

Performance certified is for Installation Type B: Free Inlet, Ducted Outlet. Performance ratings for GC-222 through GC-960 include the effects of inlet grille and backdraft damper. Speed (RPM) shown in nominal. Performance is based on actual speed of test. The sound ratings shown are loudness values in spherical sones at 5 ft. (1.5m) in a spherical free field calculated per AMCA Standard 301. Values shown are for installation Type B: Free inlet spherical sone levels.

GC 100 Series

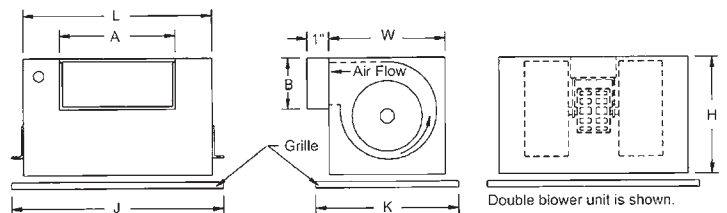


GC 200-900 Series

Dimensions (inches)

Size	Housing		Outlet		Grille						Shipping Weight
	L	W & H	A	B	Plastic		Steel		Deluxe Aluminum		
222 - 242	12-3/8	9-3/4	6	4-1/2	15-1/2	13-1/4	16-3/8	13-5/8	14-1/4	11	22
322 - 342	12-3/8	10-3/4	8	6	15-1/2	13-1/4	16-3/8	13-5/8	14-1/4	12-1/4	25
422	17	11-7/8	8	6	-	-	21	14-1/4	18-3/4	13-3/4	30
522 - 542	17	11-7/8	8	6	-	-	21	14-1/4	18-3/4	13-3/4	32
622 - 642	17	11-7/8	10-1/2	4-3/4	-	-	21	14-1/4	18-3/4	13-3/4	35
720 - 740	17	11-7/8	10-1/2	4-3/4	-	-	21	14-1/4	18-3/4	13-3/4	36
822 - 862	27	14-11/16	20	6	-	-	31-3/8	17-1/8	28-3/4	16-1/4	74
920 - 960	31	14-11/16	24-1/4	6	-	-	35-1/8	17-1/8	32-3/4	16-1/4	86

Weights are in pounds.





COOK Roof Mounted Exhaust Fans

ACE-D Centrifugal Roof Ventilator

- AMCA certified for air and sound
- Direct drive
- Aluminum construction
- Backdraft damper, birdscreen, and disconnect included
- Matching curb and fan speed control available
- 1-60-115



Catalog Number	Motor HP	Fan RPM	0" SP		1/8" SP		1/4" SP		3/8" SP		1/2" SP		3/4" SP		FSC AMPS	Base Size
			SONE	CFM	SONE	CFM	SONE	CFM	SONE	CFM	SONE	CFM	SONE	CFM		
70C10DH	1/25	1050	3.0	203	2.9	121									5	18" x 18"
70C15DH	1/20	1550	5.2	305	5.2	249	5.1	194	5.0	135					5	18" x 18"
90C10DH	1/25	1050	5.0	575	5.1	416	4.7	231							5	18" x 18"
90C15DH	1/8	1550	9.1	865	9.1	754	8.9	650	8.4	509	8.0	411	7.2	131	5	18" x 18"
100C10DH	1/25	1050	5.9	663	6.0	511	5.5	353	5.4	191					5	18" x 18"
100C15DH	1/8	1550	11.0	967	11.0	856	10.8	766	10.7	667	10.5	552			5	18" x 18"
120C10D	1/6	1075	6.3	1152	6.2	1058	6.0	958	5.7	855					10	20" x 20"
135C10D	1/6	1075	8.2	1640	8.2	1535	8.1	1424	7.7	1313	7.4	1187			10	20" x 20"
150C10D	1/3	1075	10.4	2249	10.4	2133	10.3	2013	10.0	1887	9.7	1764	8.9	1306	10	24" x 24"
165C10D	1/3	1050	12.1	2935	12.1	2799	12.0	2646	11.9	2489	11.5	2321	10.8	1902	10	24" x 24"

BROAN Ceiling Exhaust Fans & Accessories



AE80B



A110



A110L



Model	Description	CFM	Outlet Size	Wall Cap
AE80B	E★ Ceiling Fan	80	4"	WC 04
A110	E★ Ceiling Fan	110	4"	WC 04
A110L	E★ Fan/Light Combo	110	4"	WC 04

-fanAm- R-Series Commercial Plastic Inline Fan



Static Pressure (inches W.G.)

Model	Duct Dia.	Current Amp	0.0"	0.2"	0.4"	0.6"	0.8"	1.0"	1.5"	2.0"	2.5"	3.0"	Max Sp.
R-100	04"	0.23	141	120	100	78	46	-	-	-	-	-	0.975"
R-110	04"	0.74	173	162	150	139	125	115	77	15	-	-	2.213"
R-150	06"	0.78	368	332	286	248	190	163	55	-	-	-	1.686"
R-200	08"	1.00	448	404	350	317	260	225	110	30	-	-	2.213"
R-225	08"	2.09	669	624	560	540	450	440	330	210	76	-	2.76"
R-315	12"	2.24	865	812	740	700	620	570	388	240	130	37	3.135"



Accessories For Cook Fans



- WC**
- Round wall cap
 - Aluminum
 - Includes 1/2" mesh bird screen and damper
 - 3, 4, 6, 8, 10, 12



- 634/636**
- Roof jack
 - Includes backdraft damper
 - 634 = 3-1/4 x 10
 - 636 = 3 or 4



- PR8/12/16**
- Roof cap
 - Curb mount
 - Spun aluminum w/ birdscreen
 - 8": 18x18 Base
 - 12": 20x20 Base
 - 16": 28x28 Base



- PR8F/12F/16F**
- Roof cap
 - Flat base for sloped roof
 - Spun aluminum w/birdscreen
 - 8, 12, 16

Model GC	Outlet		Wall Cap Round	Wall Cap Rect.	Roof Jack	Roof Cap
	A	B				
124, 144, 164, 184	6"	-	WC 06	-	636	PR8
220, 240	8"	6"	WC 08	WCG-2	634	PR8
320, 340	8"	6"	WC 08	WCG-2	634	PR8
420	8"	6"	WC 08	WCG-2	634	PR8
520	8"	6"	WC 08	WCG-2	634	PR8
620, 640	10-1/2"	4-3/4"	WC 08	WCG-6	-	PR12
720, 740	10-1/2"	4-3/4"	WC 08	WCG-6	-	PR12
820, 840, 860	20"	6"	WC 12	WCG-8	-	PR16
920, 940, 960	24-1/4"	6"	-	WCG-9	-	PR16



- WCG**
- Wall cap
 - Galvanized steel
 - 1/2" mesh bird screen

WCG-2 = 8 1/8 x 6-1/8
WCG-6 = 10-5/8 x 4-15/16
WCG-8 = 20-1/8 x 6-1/8
WCG-9 = 24-3/8 x 6-7/8

Backdraft Dampers



Size	Cook Unit Size	Dimension
BD12	70, 90, 100	11-3/4 x 11-3/4
BD14	120, 135	13-3/4 x 13-3/4
BD16	-	15-3/4 x 15-3/4
BD18	150, 165	17-3/4 x 17-3/4
BD24	180, 195, 225, 245	23-3/4 x 23-3/4

- D Damper**
- Round back-draft damper
 - Sizes: 8, 10, 12



- BDD**
- Round back-draft damper
 - Sizes: 4, 6, 8, 10, 12



- BAS**
- BAS 1P manual reset
 - BAS 1P AR auto reset

- Franklin Building Automation Starter
- .10 to 1 HP. 120V
- .10 to 2 HP. 220V
- HOA switch
- Lockable disconnect



- FSC Fan Speed Control**

- Solid state
- Varies speed from 50-100%
- For 1-60-115 motors: 1050, 1075, 1550 RPM
- 5 AMP FSC
- 10 AMP FSC-10



- TSTAT CLG Cooling Stat**
- 50-90° F
 - 120/220/277V
 - Rated at 22 AMPs



- CGT Grease Terminator**
- For grease capture



- GIK**
- Gemini Isolator Kit



Vibration Isolators

All Isolators use 3/8" Threaded Rod.

VI HSL Spring Hanger

Model	Color	Load #
VI HSL-1-101	Yellow	25-50
VI HSL-1-102	Blue	50-100
VI HSL-1-103	Brown	100-150
VI HSL-1-104	Black	150-250



VI HESL Neoprene and Spring Hanger

Model	Color	Load #
VI HESL-1-101	Yellow	25-50
VI HESL-1-102	Blue	50-100
VI HESL-1-103	Brown	100-150
VI HESL-1-104	Black	150-250



VI RHB Housed Neoprene Hanger

Model	Color	Load #
V1 RHB-BLACK	Black	60-100
VI RHB-RED	Red	100-175



VI OML Spring Floor Mount

Model	Color	Load #
VI OML-1-101	Blue	25-50
VI OML-1-102	Blue	50-100
VI OML-1-103	Blue	100-150
VI OML-1-104	Blue	150-250



VI N Neoprene Floor Mount

Model	Color	Load #
VI ND-1-BLUE	Blue	25-35
VI ND-1-BLACK	Black	35-45
VI ND-1-RED	Red	45-70



Rubber Cork Anti-Vibration Pad

- 1/2" cork bonded between (2) 1/4" neoprene pads
- Easy to cut to fit

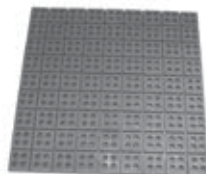
Model	Color	Load #
VI Cork 2 x 2	Black	50 PSI
VI Cork 4 x 4	Black	50 PSI
VI Cork 6 x 6	Black	50 PSI



ISO-CUBE Anti-Vibration Pad

- 18 x 18 x 3/4" sheet
- Scored in 2" x 2" segments

Model	Color	Load #
VI-ISO-18	Black	180 PSI



Rubber Anti-Vibration Pad

- 18 x 18 x 3/8" sheet
- Easy to cut to fit

Model	Color	Load #
VI-MP-18	Black	50 PSI





Air Products and Controls Duct Smoke Detectors And Accessories

SL-2000-P / SL-2000-N

Photoelectric / Ionization duct smoke detector



- 4-Wire Conventional
- Full range voltage input
- No tool thumbscrews and one piece cover
- Extra set of relay contacts
- On-board wiring diagram

STN

Sampling tube

Sizes: 30" 60" 120"

- Notched for no tool installation



Wire

TSTAT
Wire 18/8



- 8 conductor
- 18 gage
- 250'

TSTAT PLENUM
Wire 18/8



- 8 conductor
- 18 gage
- Plenum rated
- 250'

RT-3000-P

Photoelectric weather tight duct smoke detector



- Nema 4X rated for outdoor corrosive environments
- Full range voltage input
- No tools one piece cover
- Trade dedicated terminal blocks
- All visual indicators visible with cover in place

HS-100-P

Photoelectric plenum smoke detector



- For plenum return spaces with low velocities

MSR-100R/S

Remote test station w/ stainless single gang cover plate



- Includes Green Pilot, Red Alarm and Yellow Trouble Visual LED Indicators
- Selectable Buzzer for Alarm/Trouble
- Key-Operated Test/Reset
- Silence Function with Ringback, and LED Test Function

MSR-50RK/S

Remote test station MSR-50RKA/W single gang cover plate (S=stainless, W=white)



- Includes Key Test and Reset
- One Visual Pilot, Trouble and Alarm LED

MSR-100R/V/S/C

Remote test station w/ strobe assembly, clear lens, stainless double gang plate



- Includes Green Pilot, Red Alarm and Yellow Trouble Visual LED Indicators
- Selectable Buzzer for Alarm/Trouble
- Key-Operated Test/Reset
- Silence Function with Ringback, and LED Test Function.
- Strobe

TG-2500

Test Gas for duct smoke detectors

- Features a custom nozzle that works in the duct smoke detectors test port valve



A LIST OF THE MANY MANUFACTURERS WE REPRESENT

AQC Industries	Pre-Insulated Exterior and Underground Duct Systems
AbsolutAire	Direct Gas-Fired Make-Up Air Units
Atco (CLE) / Thermaflex (COL)	Insulated and Non-Insulated Flexible Duct
Berner	Air Curtains
Broan/Nutone	Bath Fans & Range Hoods
Caddy (nVent)	Pipe & Duct Hangers and Roof Supplies
Captiveaire	Kitchen Hood Exhaust Systems and DOAS Units
Cook	Exhaust and Supply Fans / Blowers
Entrematic	HVLS Fans
Envirco	Fan Filter Units
FabricAir	Fabric Ductwork
FanAm	Polypropylene Fans / Blowers for Corrosive & Explosive Environments
GreaseMaster	Kitchen Hood Exhaust Systems
Honeywell Analytics	Gas Detection Systems
Hranec	Spiral and Rectangular Ductwork
INDEECO	Electric Duct and Comfort Heating Products
Jeremias	Prefabricated Chimney, Engine Exhaust & Grease Duct Systems
J.L. Industries	Drywall Access Doors & Roof Hatches
KE Fibertec	Fabric Ductwork
Milcor	Drywall Access Doors & Roof Hatches
Miro	Roof Pipestands
Modine	Cabinet, Fin Tube, Infrared & Unit Heaters / Convectors / Make-Up Air Units
Nederman	Capture at Source, Bench Top & Vehicle Exhaust Capture Systems
Pate	Roof Curbs, Pipe Curbs & Equipment Supports
Panasonic	Bath Fans
Precision Air	Surgical Room Airflow Solutions
Parker HVAC Filtration	HVAC and HEPA Air Filters & Equipment / Cleanroom Filters
QMark (Marley)	Electric Heating & Ventilation Products
RenewAire	Energy Recovery Ventilators and DOAS Units
Ruskin	Fire, Smoke & Control Dampers / Louvers / Sound Attenuators / Air Measuring Products/ERV's
Seiho	Contemporary Designs of Nozzles, Grilles & Registers
Selkirk	Prefabricated Chimney, Engine Exhaust & Grease Duct Systems
SEMCO	Spiral Duct, Duct Silencers & Equipment Housings
Southwark	Prefabricated Sheet Metal Ducts & Fittings
Systemair	Parking Garage Ventilation Solutions
Titus	Grilles, Registers & Diffusers / VAV Diffusers / VAV Terminals / Fan Coil Units
Vibro-Acoustics	Duct Silencers & Noise Control Systems and Vibration Isolation
Young Regulator	Manual Dampers, Motorized Dampers & Remote "Bowden" Cable Controls
US Draft/Laundry Fab	Vent, Laundry, and Draft Control Systems
ZOO	Destratification Fans



Terms and Conditions

Acceptance of Order:

All orders are subject to acceptance. No terms or conditions appearing in the buyer's order that are contrary to the seller's terms and conditions shall be binding upon the seller unless specifically agreed upon in writing.

Credit Approval:

Buyer's orders are accepted by the seller subject to credit investigation and approval.

Cancellation of Orders:

The buyer may modify or cancel its order upon written notice and upon payment to the seller of reasonable charges. Special orders which are not stock cannot be returned for credit.

Terms of Payment:

Unless otherwise stated, payment shall become due 30 days from date of invoice. If, in the seller's judgement, the buyer's financial condition at any time does not justify the terms specified, the seller may require full or partial payment as a condition to commencing the order. Prices do not include sales tax.

For tax exempt jobs, tax exempt form must be presented at the time of order.

Freight:

Unless otherwise stated in quotation form, prices are F.O.B. (Free on board) Cleveland or Columbus Warehouse. All freight charges will added to the invoice, unless stated in quotation form.

Transportation Risk:

Delivery to the initial carrier shall constitute delivery to the buyer, and the seller's responsibility ceases upon delivery in good order to such a carrier.

Minimum Order Charge: \$25

Prices are subject to change without notice.

Return Policy:

Special orders which are not stock cannot be returned for credit.

Stock items can only be returned under the following conditions:

1. Prior approval from Mussun Sales, Inc. along with job name or purchase order number.
2. Material must be in saleable condition which Mussun Sales, Inc. will inspect.
3. Credit amount to be determined by original selling price less restocking charge.
4. Orders purchased by credit card will be subject to an additional 5% credit card fee if returned.

We Accept:



CLEVELAND WAREHOUSE



CLEVELAND LEARNING CENTER



COLUMBUS WAREHOUSE



COLUMBUS LEARNING CENTER





Cleveland

3419 Carnegie Avenue
Cleveland, Ohio 44115-2638

Phone: 216-431-5088

E-mail: cleveland@mussun.com

Web: www.mussun.com

Akron

470 Portage Lakes Drive, Suite 211
Akron, Ohio 44319-2298

Phone: 330-644-8836

E-mail: akron@mussun.com

Web: www.mussun.com

Columbus

1715 Westbelt Drive
Columbus, OH 43228

Phone: 614-294-4822

E-mail: columbus@mussun.com

Web: www.mussun.com

www.mussun.com