



What's New From Ruskin? Introducing the CD60CE

Ruskin is pleased to announce the newest addition to their Critical Environment (CE) Damper Series. This new addition is CD60CE in 316 stainless steel construction. The high-performing Ruskin Model CD60CE is designed to control and regulate air movements in medium to high velocity and pressure HVAC Systems.

CD60CE features:

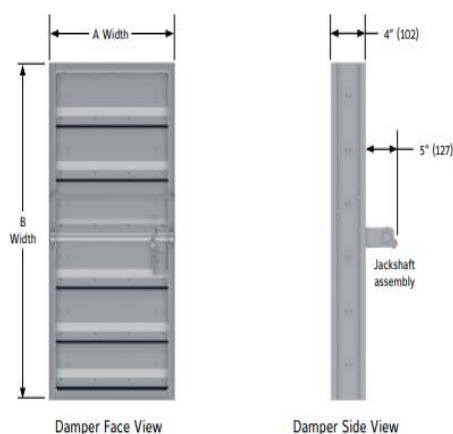
- Corrosion resistant
- Airflow Blades for low pressure drop and high performance
- Low maintenance construction
- AMCA Class 1A leakage rating
- Mechanically fastened blade edge seals
- Exclusive 5-year warranty

Commonly used locations:

- Chemical and petrochemical industry
- Food processing
- Pharmaceutical equipment
- Potable water
- Wastewater treatment
- Marine/coastline applications



W & H dimensions are furnished with 1/4" (6) deduct standard, unless ordered actual size.



Maximum Section: 48 x 72

Maximum Assembly: Unlimited



New Square to Round CFD Boots from Ruskin

Ruskin is also excited to launch their new CFD7T-SR UL Classified Ceiling Radiation Fire Dampers for wood truss construction. This Damper is factory mounted on top of an R6 insulated steel plenum. It is designed to accept a grille with an OBD up to a maximum of 3" in depth.

CFD7T-SR are listed for installation in wood truss floor/ceiling and roof/ceiling designs: L528, L546, L558, L574, L585, L586, L592. P533, P545, P548, P572 and H502

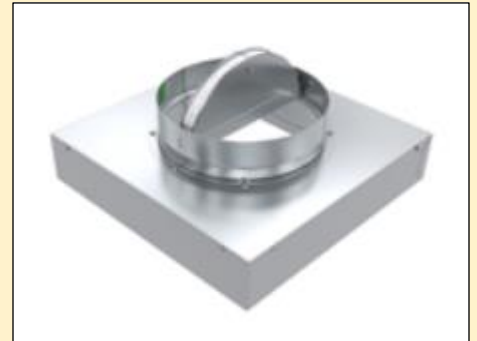
Standard Construction

Frame: Galvanized steel (in gauges required by UL listing R8039)

Fusible Link: 165 F is standard, 212 F is available

Plenum Box: 26-gauge galvanized steel

Insulation: R6 Duct Liner



Plenum Box Size:

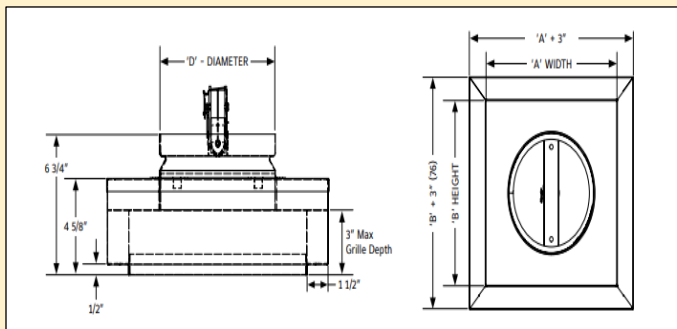
Minimum size: 5" w x 5"h

Maximum Size: 12" w x 12"h

Damper Size:

Minimum size: 5" Dia.

Maximum size: 12" Dia.



NEW- Severe Weather and Extreme Performance Louvers

The HZ700MD is a double framed extreme performance louver that is Miami Dade Approved. Its two-piece blade design provides protection from the wind-driven rain penetration, reducing damage and additional operating expenses. The HZ700MD has visible mullion construction and a horizontal front blade design for architecturally pleasing aesthetics.



The EME420DD Stationary Wind Driven Rain Louvers has a 4" deep frame and Sight proof blade. This Louver is AMCA certified air and water performance with maximum 1067 fpm water penetration. It also has a continuous blade up to 120" wide.

Old school order entry

So many aspects simple aspects of our industry today, like transmitting orders to the factory, were light years away even thirty years ago.

Mussun began operations in 1951 strictly in the plumbing field. HVAC lines were added in the late 50's and early 60's. Back then, quotes and orders were handwritten then sent to the receptionist for typing. The orders were then mailed to the plant thus losing 3-5 days before the order was actually received. Express orders were phoned in with typed order confirmations sent via mail. And order acknowledgements were then mailed back. So often it was a week and a half before a formal acknowledgement was received back at Mussun.

Bill Mussun bought a Telex machine in the late 1950's but recipients were limited (the plant had to have a Telex) and as past Mussun salespeople would describe: "A real pain to operate". It was fine for a quick message, but not suited for a detailed order. In 1978, Mussun Salesman Jim Nowak convinced Mussun owner Geoff Andres to buy three fax machines – one for Akron, one for Cleveland, and one for Columbus – at the price of \$2,600.00 each!

The Telex



But only Titus initially had one for their order department! Other manufacturers soon followed and the fax became the norm for order entry for the next two decades.

Mussun's first computer was purchased in 1985 for word processing of quotes and letters. The first computer for inventory was purchased in 1994. This computer replaced the old card file system which kept track of inventory. Each item in the warehouse had an index card and quantities were updated on the card. The first computer in the sales department also showed up in 1994 and its job was strictly to keep track of Notices of Commencements and Notices of Furnishings in accordance with the new changes to Ohio Lien law.

PC's for each salesman (at first shared by several salespeople in work areas) soon showed up as manufacturers sent us floppy discs with DOS-based selection programs. With the arrival of software selection programs in the mid to late 1990's, reps were now able to select products and generate orders on their PC's – but many order forms were initially printed and faxed – and then manually entered at the factory.

Selecting fans prior to Cookware software was all done by hand. Many of the sales desks at Mussun looked like the counter at a typical Western Auto parts store. Dozens and dozens of fan catalogs were inserted into a metal rack which held fan catalogs at a 45-degree angle for optimal viewing and easy reference. The racks were 24-36" long and stretched across the salesman's desks. And the catalogs had to be constantly updated by removing the old ones and inserting new ones into the racks. Not only did salesmen select the fan and motor and accessories, but also selected each pulley and belt based on rpm and horsepower, which involved fan curves and endless charts and columns of part numbers. This was an involved process for even a simple centrifugal fan!

As we look back now, it was amazing that the fans actually did the performance they were intended since the fan's key components were hand selected! Reading fan curves and selecting all the parts needed to build the fan to a certain performance without over-amping the motor was a true art and an integral part of being the manufacturer's rep.

But like the Gateway Arch and the Mackinac Bridge – all drawn by hand with materials ordered by hand – somehow it got done. And grilles and fans and dampers were ordered, built, and shipped, and buildings got built.

The MAC2000VF

Cook's Mobile Air Cleaner can be moved into service at a moment's notice.



School is right around the corner and the MAC2000VF is ideal for classrooms with no ductwork.

These are also ideal for common areas in assisted living facilities.

We have no better mousetrap to clean and filter the air!

See your Mussun Sales Representative for more details.

Looking for a quality manual damper with a user-friendly, lockable position, hand quad?

Look no further than the Young 5020L with Rossi Quadrant. Ideal for commercial and industrial applications where an easy to use locking quad damper is a must.

The Young Regulator 5020L is a round damper with a commercial quality positive-looking hand quadrant on a 2" stand off for insulation. The hand-quadrant indicates true blade position and provides efficient airflow control in conventional air handling systems. It is designed for medium velocity and differential pressure applications up to 2" W.C., with a maximum approach velocity of 2,000 feet per minute.



See your Mussun Sales Representative for more details.

PDH HOURS

Mussun Sales posts upcoming webinars on our Events section of our website.
Be sure to check out topics which qualify for PDH Hours.

To Unsubscribe, simply reply to this email with "unsubscribe" in the subject line.

Mussun Sales - Since 1951

Cleveland - Akron - Columbus
216-431-5088 330-644-8836 614-294-4822