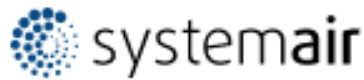


Mussun Memo

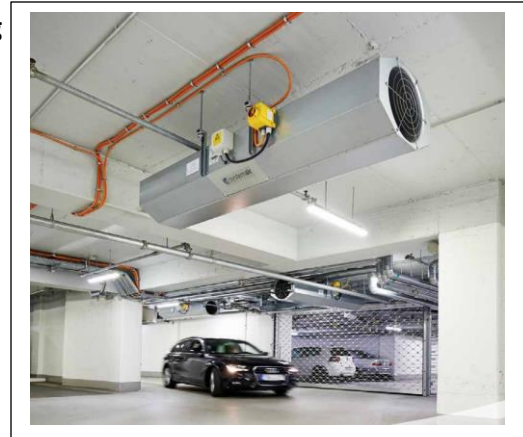
Mussun Sales, Inc

July 2022



GOOD THINGS COME FROM ABOVE! Jet Fan Systems for Parking Garages

What is **Systemair Parking Garage Ventilation**? These fans ventilate your parking garage quietly and efficiently. Ductwork in garages have drawbacks. Low headroom, closely spaced beams often make ductwork impractical. Strategically placed Jetstream fans push or pull the air through the entire structure, sweeping it free of CO and other noxious gases. A new step forward in garage induction ventilation systems, jet fans combine EC motors, digital controls, and optimal gas sensors to deliver the ultimate in energy efficiency and safety.



Parking garages are often the first and last impression you have of a building. A feeling of safety and good air quality in the garage are important. If the feeling is the opposite it will affect the impression of the entire building. For instance, jet fans equipped with air quality CO/NO sensor, ensures good illumination with little shadow formation as opposed to a network of air ducts.

Characteristics and advantages at a glance:

- *For daily ventilation requirements and smoke extraction in case of fire F300 (300 Degrees Celsius/120min.), F400 (400 Degrees Celsius/120min.) (IV Model)
- *Symmetrical impeller blades. 100% reversible (TR) with low noise emissions.
- *Aerodynamic radial impeller for maximum thrust and low noise emissions. (IV Model)
- *Green Ventilation jet fan with energy efficient EC Tech. (IV Smart Model)
- *IP55 motor's with insulation class H (smoke extraction version) insulation Class F (CO ventilation), according to EN60035-5.
- *50/60 Hz version available
- *Tested safety switch (REV) optional
- *Housing from galvanized sheet steel
- *CE certification by BSI

The functional one.

AJR-TR / AJR (B)-TR



The compact one.

IV



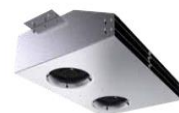
The stylish one.

AJ8-TR / AJ8(B)-TR - Premium



The space-saving miracle.

IV smart



For more information please contact your Mussun Sales Representative!